

## LINEAR CCD-4700

### Experimental Sample

CCD-4700 is a linear CCD of 4700 pixels and  $6.5 \times 6.5 \mu\text{m}$  pixel size. The device has a bilinear arrangement and comprises individual sections for charge packet detection and accumulation. It has built-in antiblooming with overillumination factor no less than 100. Electronic exposure mode ( $\geq 10 \mu\text{s}$ ) is provided. The product is a customized item.



Application: CCD-4700 is intended for application in TV and optoelectronic systems with enlarged space resolution.

### SPECIFICATIONS

Number of pixels	4700
Pixel size, $\mu\text{m}^2$	$6.5 \times 6.5$
Pixel pitch, $\mu\text{m}$	6.5
Package dimensions, mm	$41.6 \times 17.5$
Number of output registers	2
Number of output units	2
Register control	2-phase
Typical data output rate along the register, kHz	2500
Saturation signal, V	0.6
Dynamic range	2500
Responsivity, $\text{V/lx}\cdot\text{s}$	0.6
Relative luminous nonuniformity, %	$\pm 12$
Relative dark signal nonuniformity, %	0.8
Maximum voltage on terminals, V	20

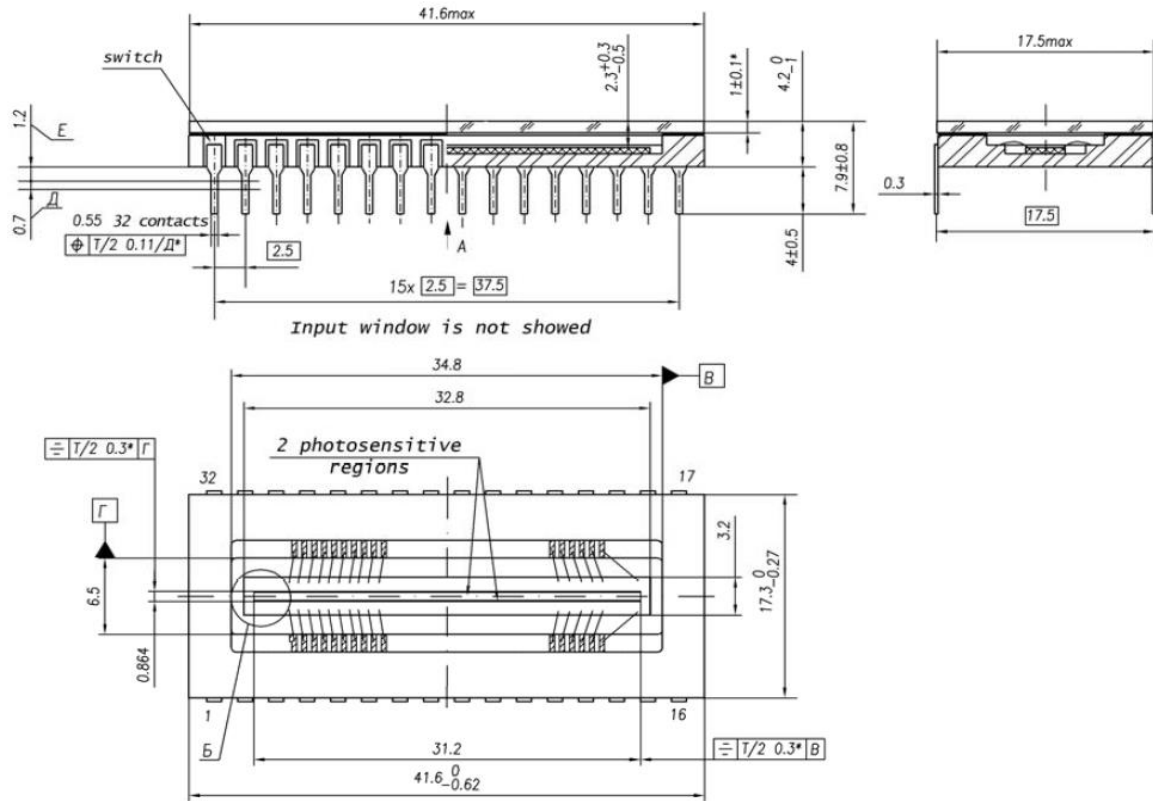
Maximum operation frequency, MHz

5

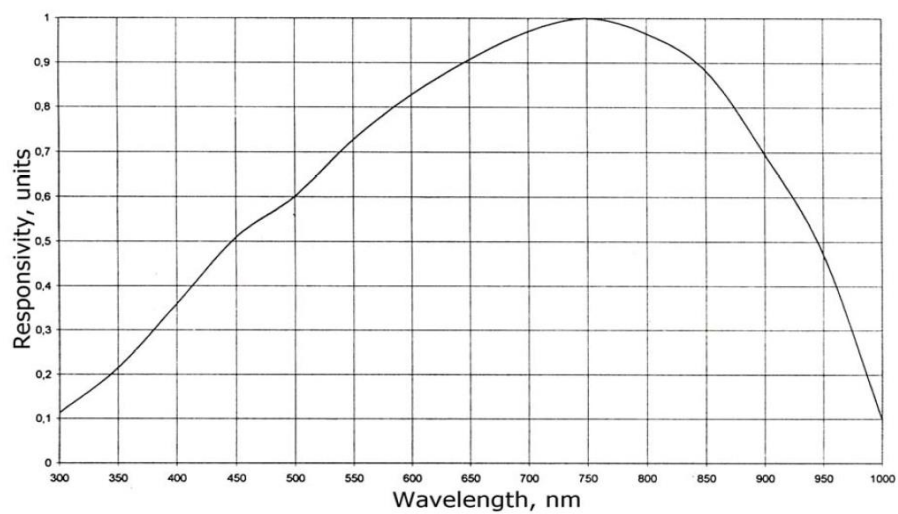
Operation temperature range, °C

-50 ÷ +50

## DIMENSIONAL OUTLINE



## SPECTRAL RESPONSE CHARACTERISTICS



Tel.: +7 (812) 552-61-54

Fax: +7 (812) 552-61-54

E-mail: [info@electron.spb.ru](mailto:info@electron.spb.ru)

Site: [www.electron.spb.ru](http://www.electron.spb.ru)